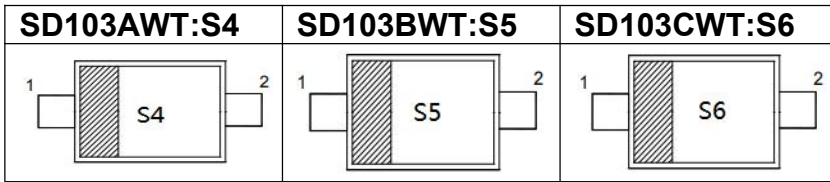


## Surface Mount Schottky Barrier Diodes

### Features

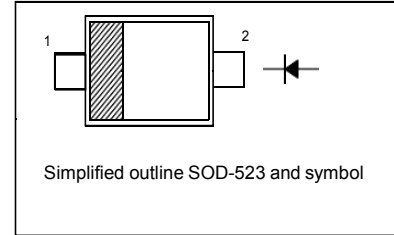
- Low Forward Voltage

### MARKING



### PINNING

PIN	DESCRIPTION
1	Cathode
2	Anode



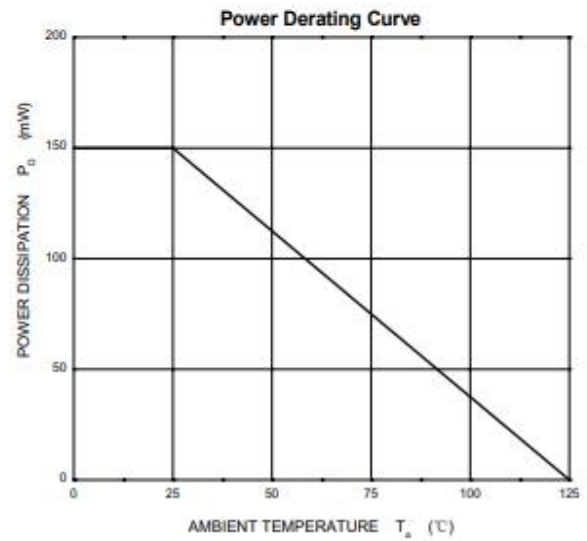
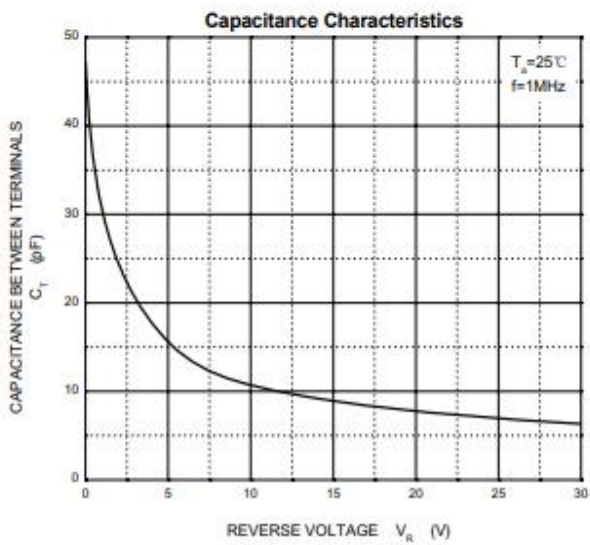
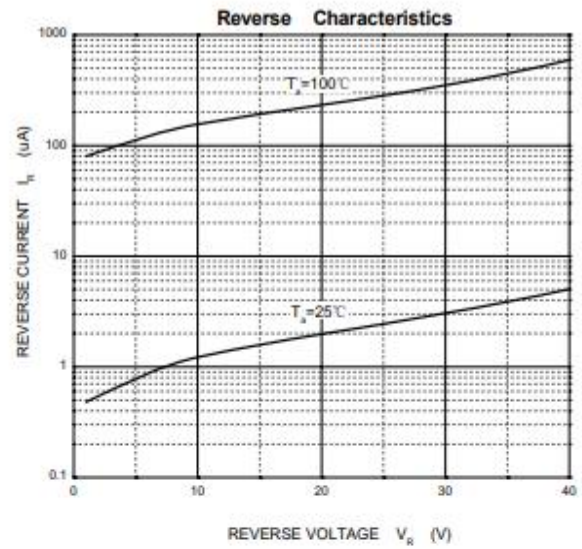
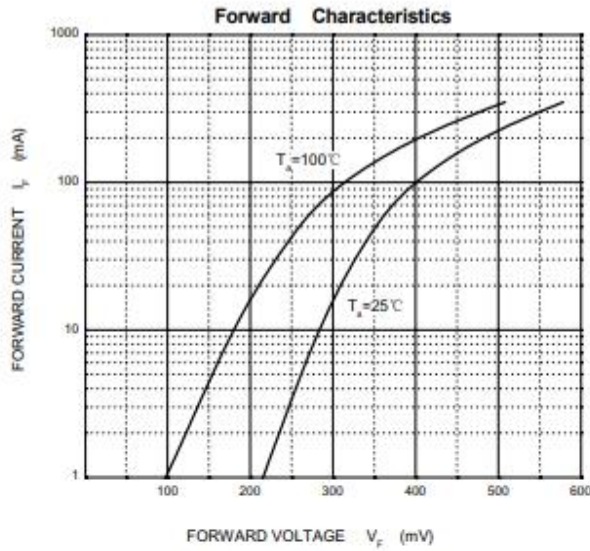
### Absolute Maximum Ratings (T<sub>a</sub> = 25 °C)

Parameter	Symbol	Value	Unit		
Peak Repetitive Reverse Voltage	V <sub>RRM</sub>	SD103AWT SD103BWT SD103CWT	40 30 20	V	
Reverse Voltage		V <sub>R</sub>	SD103AWT SD103BWT SD103CWT	40 30 20	V
Average Forward Rectified Current		I <sub>F(AV)</sub>		350	mA
Non-Repetitive Peak Forward Surge Current at t = 1 s	I <sub>FSM</sub>		2	A	
Power Dissipation	P <sub>tot</sub>		200	mW	
Operating and Storage Temperature Range	T <sub>j</sub> , T <sub>stg</sub>		- 65 to + 125	°C	

### Characteristics at T<sub>a</sub> = 25 °C

Parameter	Symbol	Min.	Typ.	Max.	Unit	
Reverse Breakdown Voltage at I <sub>R</sub> = 10 μA	V <sub>(BR)R</sub>	SD103AWT SD103BWT SD103CWT	40 30 20	- - -	V	
Reverse Leakage Current at V <sub>R</sub> = 30V at V <sub>R</sub> = 20 V at V <sub>R</sub> = 10 V		I <sub>R</sub>	- - -	- - -	5 5 5	μA
Forward Voltage at I <sub>F</sub> = 20 mA at I <sub>F</sub> = 200 mA		V <sub>F</sub>	- -	- -	0.37 0.6	V
Total Capacitance at V <sub>R</sub> = 0 V, f = 1 MHz	C <sub>T</sub>	-	50	-	pF	
Reverse Recovery Time at I <sub>F</sub> = I <sub>R</sub> = 200 mA, I <sub>rr</sub> = 0.1 I <sub>R</sub> , R <sub>L</sub> = 100 Ω	t <sub>rr</sub>	-	10	-	ns	

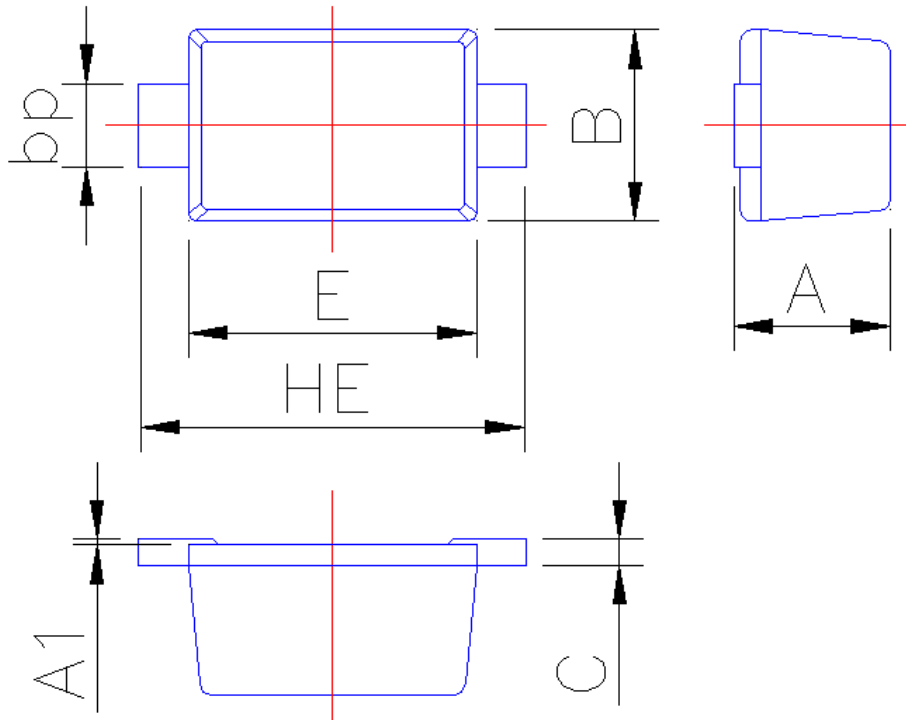
## Typical Characteristics



### PACKAGE OUTLINE

Plastic surface mounted package; 2 leads

SOD-523



Symbol	Dimension in Millimeters	
	Min	Max
A	0.60	0.70
A1	0	0.05
B	0.75	0.85
bp	0.25	0.40
C	0.09	0.15
E	1.15	1.25
HE	1.50	1.70